

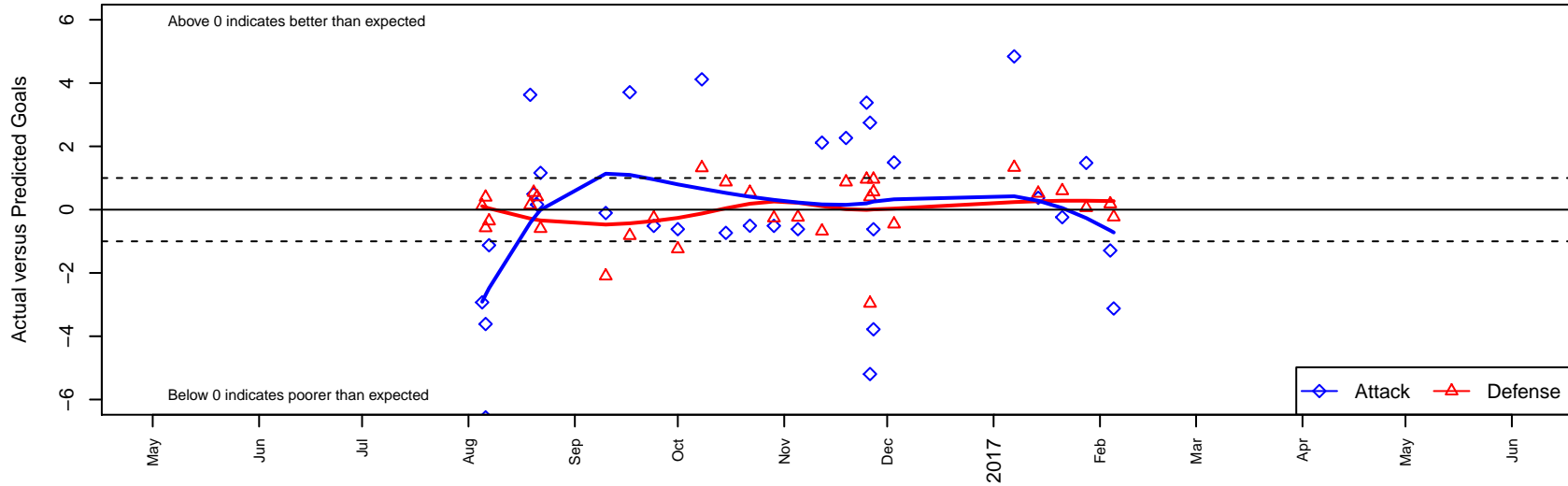
NSC Knights Green B06

Northshore SC
 Woodinville, WA
 B06 total strength=755
 attack=1.3 defense=0.57
 fall league = NPSL Div 1 (06) U11

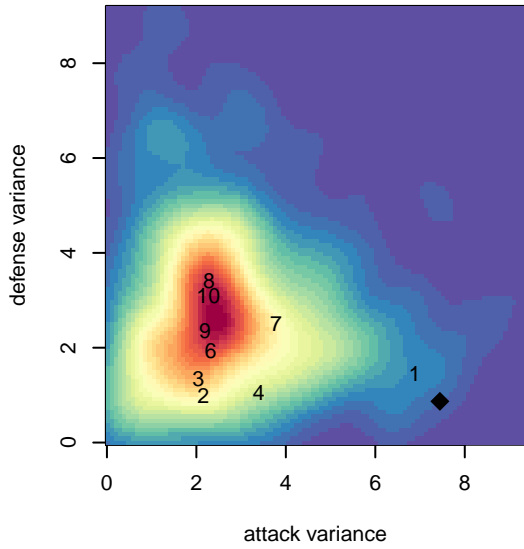
alt names used:
 NORTSHORE SELECT NSC B06 GREEN—|
 NSC B06 Green
 NORTH SHORE SELECT SOCCER NSC KNIC
 NSC B06 Green Knights
 NSC Knights B06 Green

Venues played:
 2016 WA Rush Cup B06 Bronze 9v9 U11
 2016 Bigfoot Gold U11
 2016 NPSL Division 1 (06) U11
 2016 Cranberry Cup U11
 2016 Founders Cup B06 Div A

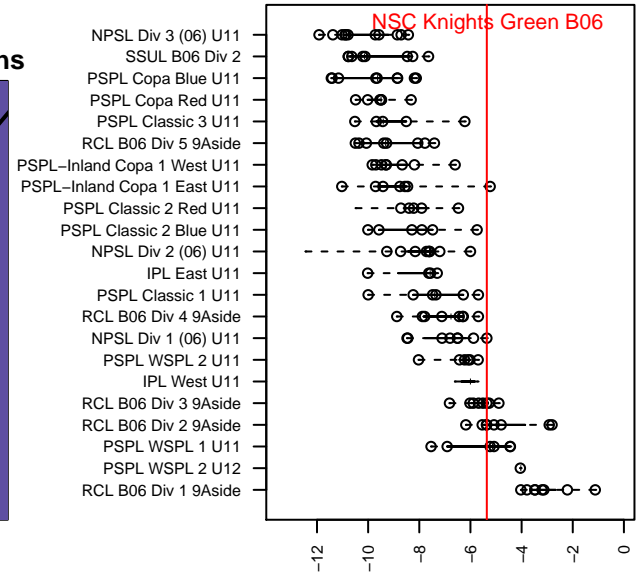
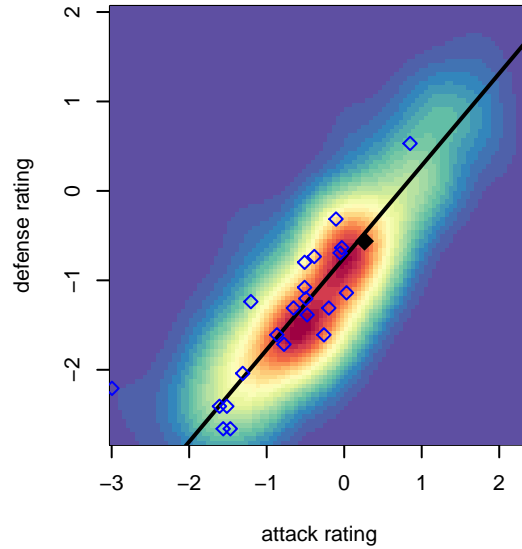
NSC Knights Green B06
 Dots are actual minus expected GF (blue circles) and GA (red triangles).
 Blue line is smoothed change in attack strength. Red is smoothed change in defense strength.



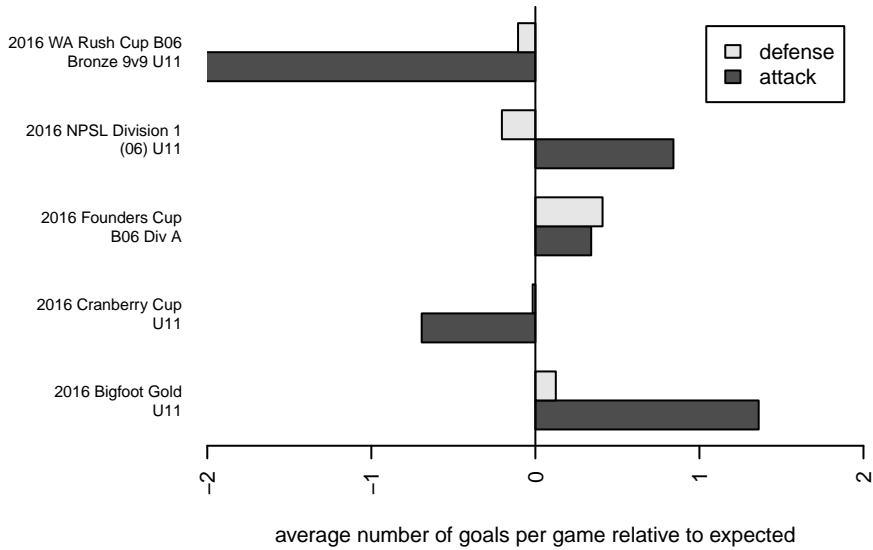
**attack and defense variance (black dot)
relative to other teams
and top 10 in region**



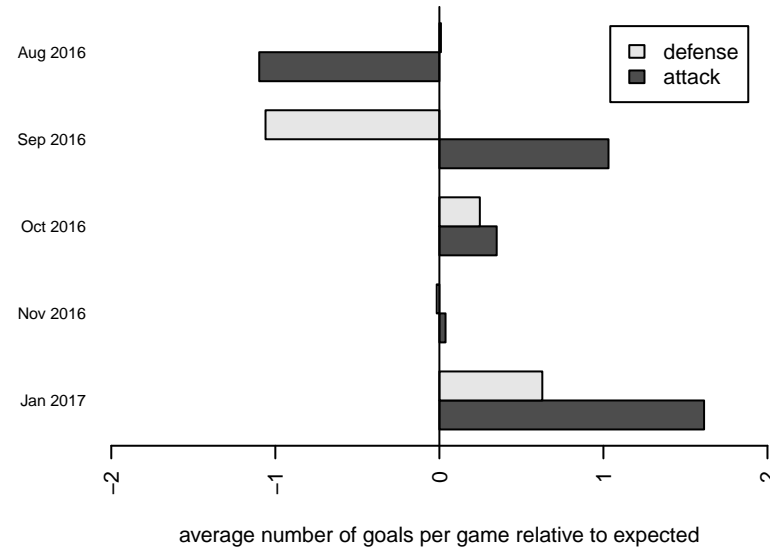
**attack and defense rating
relative to others at age
and all opponents in last 13 months**



Performance relative to 13 month average



Performance relative to 13 month average



| date | home | | away | | venue | pred.home | pred.away |
|-------------|------------------------------|----|-----------------------------------|----|-------------------------------------|------------------|------------------|
| 2017-02-05 | NSC Knights Green B06 | 0 | BIFC Blue B06 | 2 | 2016 Founders Cup B06 Div A | 3.12 | 1.77 |
| 2017-02-04 | NSC Knights Green B06 | 2 | Kent United Green B06 | 1 | 2016 Founders Cup B06 Div A | 3.29 | 1.18 |
| 2017-01-28 | NSC Knights Green B06 | 5 | Seattle United W White B06 | 1 | 2016 Founders Cup B06 Div A | 3.52 | 1.06 |
| 2017-01-21 | NSC Knights Green B06 | 4 | Highline SA B06 | 0 | 2016 Founders Cup B06 Div A | 4.24 | 0.60 |
| 2017-01-14 | STU Evolution Yellow B06 | 0 | NSC Knights Green B06 | 14 | 2016 Founders Cup B06 Div A | 0.52 | 13.63 |
| 2017-01-07 | NSC Knights Green B06 | 11 | Seattle United S White B06 | 0 | 2016 Founders Cup B06 Div A | 6.16 | 1.33 |
| 2016-12-03 | NSC Knights Green B06 | 6 | Crossfire Select Bakirci B06 | 2 | 2016 NPSL Division 1 (06) U11 | 4.51 | 1.54 |
| 2016-11-27 | NSC Knights Green B06 | 6 | MRFC White B06 | 0 | 2016 Cranberry Cup U11 | 9.78 | 0.56 |
| 2016-11-27 | NSC Knights Green B06 | 4 | NSC Kingsmen White B06 | 0 | 2016 Cranberry Cup U11 | 4.62 | 0.96 |
| 2016-11-26 | NSC Knights Black B06 | 0 | NSC Knights Green B06 | 13 | 2016 Cranberry Cup U11 | 0.40 | 18.19 |
| 2016-11-26 | NSC Knights Green B06 | 8 | NSC Skilz White B06 | 4 | 2016 Cranberry Cup U11 | 5.25 | 1.04 |
| 2016-11-25 | NSC Kingsmen White B06 | 0 | NSC Knights Green B06 | 8 | 2016 Cranberry Cup U11 | 0.96 | 4.62 |
| 2016-11-19 | Crossfire Select Meade B06 | 0 | NSC Knights Green B06 | 9 | 2016 NPSL Division 1 (06) U11 | 0.87 | 6.73 |
| 2016-11-12 | Seattle United S Blue B06 | 2 | NSC Knights Green B06 | 5 | 2016 NPSL Division 1 (06) U11 | 1.32 | 2.88 |
| 2016-11-05 | NSC Knights Green B06 | 6 | Seattle United NE Blue B06 | 1 | 2016 NPSL Division 1 (06) U11 | 6.62 | 0.76 |
| 2016-10-29 | Seattle United W Blue B06 | 2 | NSC Knights Green B06 | 2 | 2016 NPSL Division 1 (06) U11 | 1.74 | 2.51 |
| 2016-10-22 | Crossfire Select Bakirci B06 | 1 | NSC Knights Green B06 | 4 | 2016 NPSL Division 1 (06) U11 | 1.54 | 4.51 |
| 2016-10-15 | NSC Knights Green B06 | 6 | Crossfire Select Meade B06 | 0 | 2016 NPSL Division 1 (06) U11 | 6.73 | 0.87 |
| 2016-10-08 | NSC Knights Green B06 | 7 | Seattle United S Blue B06 | 0 | 2016 NPSL Division 1 (06) U11 | 2.88 | 1.32 |
| 2016-10-01 | Seattle United NE Blue B06 | 2 | NSC Knights Green B06 | 6 | 2016 NPSL Division 1 (06) U11 | 0.76 | 6.62 |
| 2016-09-24 | NSC Knights Green B06 | 2 | Seattle United W Blue B06 | 2 | 2016 NPSL Division 1 (06) U11 | 2.51 | 1.74 |
| 2016-09-17 | Kent United Green B06 | 2 | NSC Knights Green B06 | 7 | 2016 NPSL Division 1 (06) U11 | 1.18 | 3.29 |
| 2016-09-10 | NSC Knights Green B06 | 4 | Seattle United Shoreline Blue B06 | 4 | 2016 NPSL Division 1 (06) U11 | 4.10 | 1.90 |
| 2016-08-22 | Crossfire Premier B B06 | 5 | NSC Knights Green B06 | 2 | 2016 Bigfoot Gold U11 | 4.40 | 0.84 |
| 2016-08-21 | Crossfire Premier B B06 | 4 | NSC Knights Green B06 | 1 | 2016 Bigfoot Gold U11 | 4.40 | 0.84 |
| 2016-08-20 | Crossfire Select Bakirci B06 | 1 | NSC Knights Green B06 | 5 | 2016 Bigfoot Gold U11 | 1.54 | 4.51 |
| 2016-08-19 | Monroe Cobras FC B06 | 1 | NSC Knights Green B06 | 8 | 2016 Bigfoot Gold U11 | 1.15 | 4.37 |
| 2016-08-07 | GS Surf C B06 | 2 | NSC Knights Green B06 | 1 | 2016 WA Rush Cup B06 Bronze 9v9 U11 | 1.64 | 2.12 |

| date | home | | away | | venue | pred.home | pred.away |
|-------------|---------------------|---|-----------------------|----|-------------------------------------|------------------|------------------|
| 2016-08-06 | PSA Force Black B06 | 1 | NSC Knights Green B06 | 10 | 2016 WA Rush Cup B06 Bronze 9v9 U11 | 0.43 | 16.56 |
| 2016-08-06 | PacNW Gold B06 | 0 | NSC Knights Green B06 | 10 | 2016 WA Rush Cup B06 Bronze 9v9 U11 | 0.39 | 13.61 |
| 2016-08-05 | NW United Red B06 | 0 | NSC Knights Green B06 | 10 | 2016 WA Rush Cup B06 Bronze 9v9 U11 | 0.12 | 12.93 |